



Lowe's Canada File Upload Structure

PURPOSE

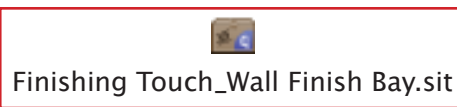
This document describes the folder structure that must be used when uploading projects to Lowes.leapfile.com.

THE PROJECT FOLDER

Below is a sample Project Folder. The individual folders and their contents are detailed on the following pages.

Upload Archive:

This is the Main Project folder in compressed format.



Main Project folder: This is the uncompressed Upload Archive. It contains the two folders: Components and Set Diagrams.

Finishing Touch_Wall Finish Bay

Components

ProdSpec_Finishing Touch_Wall Finish Bay.xls

_Fonts

- FolioBTBol.otf
- FolioBTExtBol.otf
- FolioBTLig.otf
- FolioBTBol.otf
- NewsGot.ttf
- NewsGotBol.ttf
- NewsGotObl.ttf
- NewsGotBolObl.ttf

Production Specification form: The completed Production Specification form for the project.

_Fonts folder: Contains the fonts used in every layout in the project.

Header 8ft

Links

- HeaderBG.eps

Proofs

- Header 8ft.pdf
- Header 8ft.ai

Individual Components folders: Use one folder per component. Each component folder contains the following files/subfolders:

Layout file:

The layout file is contained in the component folder itself.

Links folder:

Contains all support art.

Proofs folder:

Contains a LoRes PDF proof of the layout. This proof will have the same name as its corresponding layout file.

Bay Graphic Left

Links

- BedroomImg1.eps
- WallSwatch1.eps

Proofs

- BayLeft.pdf
- BayLeft.ai

Bay Graphic Right

Links

- BedroomImg2.eps
- WallSwatch2.eps

Proofs

- BayRight.pdf
- BayRight.ai

Components folder:

Contains Fonts Folder, Production Specification Form, Individual Components Folders, and Set Diagrams Folder.

Set Diagrams folder:

Contains diagrams of each display version with keyed graphics, hardware and product samples.

Set Diagrams

- Diag_Bay1_00001.pdf
- Diag_Bay2_00002.pdf
- Diag_Bay3_00003.pdf

FOLDERS AND FOLDER CONTENTS

MAIN PROJECT FOLDER

This folder is compressed into a .sit or .zip archive file, which is then uploaded through Lowes.leapfile.com. It contains two subfolders: Components and Set Diagrams—detailed below.

Naming convention:

[vendor name]_[project description]
Finishing Touch_Wall Finish Bay

COMPONENTS FOLDER

The Components folder contains a _Fonts folder, Production Specifications Form, Individual Components folders, and Set Diagrams folder, as detailed below.

Production Specification Form

Download this Excel document from Lowes.leapfile.com. A completed Production Specification Form is required to capture production information for every component in the project.

The Production Specification Form should be named to correspond with the project name, for example:

ProdSpec_[project description].[ext]
ProdSpec_Finishing Touch_Wall Finish Bay.xls

_Fonts Folder

The _Fonts folder contains all the fonts used for every component in the project. When gathering a project, include the entire font family—this will allow changes to be made to font weights if appropriate, while maintaining the design's original look and feel.

Note the underscore (“_”) in the _Fonts folder name. This is done to clearly distinguish the _Fonts folder from the Individual Component Folders.

Individual Component Folders

The individual component folders are contained within the Components folder. Each component folder contains the Layout file, Links folder and Proofs folder.

Each individual component folder should be named with the component type (e.g. header, brochure, in-bay sign, etc...).

[component type]

Header

Layout File(s)

Layout file(s) should be named in a way that will easily identify its component type (e.g. header, brochure, in-bay sign, etc...), for example:

[component type].[ext]

Header.ai

Links

The Links folder contains all the support art used in the Layout files for that particular component.

Proofs

A PDF proof for each Layout file must be placed in the Proofs folder. The designer will use this PDF to check the accuracy of the corresponding Layout file. It should be low resolution and named with the same name as the Layout file from which it was created:

[component type].pdf

Header.pdf

SET DIAGRAMS FOLDER

The vendor is responsible for providing a rendering or in-store photo of each display version. (Occasionally, vendors require different versions of the same display. Most often due to planogram variations in different stores.)

Each Set Diagram must be keyed to identify the location of all graphics, hardware and product samples.

All Set Diagrams are stored in a folder called Set Diagrams.
Each Set Diagram should be a PDF file, named as follows:

Diag_[Planogram bay number]_[Planogram index number].pdf
Diag_Bay1_00001.pdf

See the next section for information on the creation of Set Diagrams.

SET DIAGRAMS

The next two pages show sample Set Diagrams. A Set Diagram can be a rendering or in-store photo. Occasionally, vendors require different versions of the same display; most often due to planogram variations in different stores. If this is true for your project, you must provide a Set Diagram for each display version.

Each Set Diagram must be keyed to identify the location of all graphics, hardware and product samples. Be sure to group each component into one of the following subsections:

1. Graphics
2. Hardware
3. Product Samples

PLANOGRAM NAME: *

Faux Treatments

VENDOR NAME / PROJECT NAME:

Finishing Touch: 8' Decorative Wall Finishes Bay

PLANOGRAM BAY NUMBER: *

1

PLANOGRAM INDEX NUMBER: *

00212358

* NOTE: This information is required if you are submitting approved, bilingual materials that are used in U.S. Lowe's stores. If you do not have U.S. materials and are submitting graphics proposed for use in Canadian stores, this Planogram information is not required. See planogram sample on page 7 & 8 of this PDF for reference.



SAMPLE

SAMPLE

	Graphics:	Hardware:	Product Samples:
<p>Be sure to reference these key characters to their corresponding production information in the Production Specifications Form.</p>	A Header	B Beam Mount (Lowe's Reference Code LOW1012461)**	H Swatches
	C In-Bay Left	F Custom Brochure Holder	
	D In-Bay Center	I Custom Wedge	
	E In-Bay Right	J Tearpad Holder (Lowe's Reference Code LOW01006127)	
	G Brochure		
	K Tearpad		

** NOTE: This hardware may no longer be approved for use in Lowe's. Please check with VSGCanada@prattcorp.com before specifying this hardware for your Canadian materials.

PLANOGRAM NAME: *

Hardware

PLANOGRAM BAY NUMBER: *

3

VENDOR NAME / PROJECT NAME:

Campbell: Chain, Cable & Accessories Bay

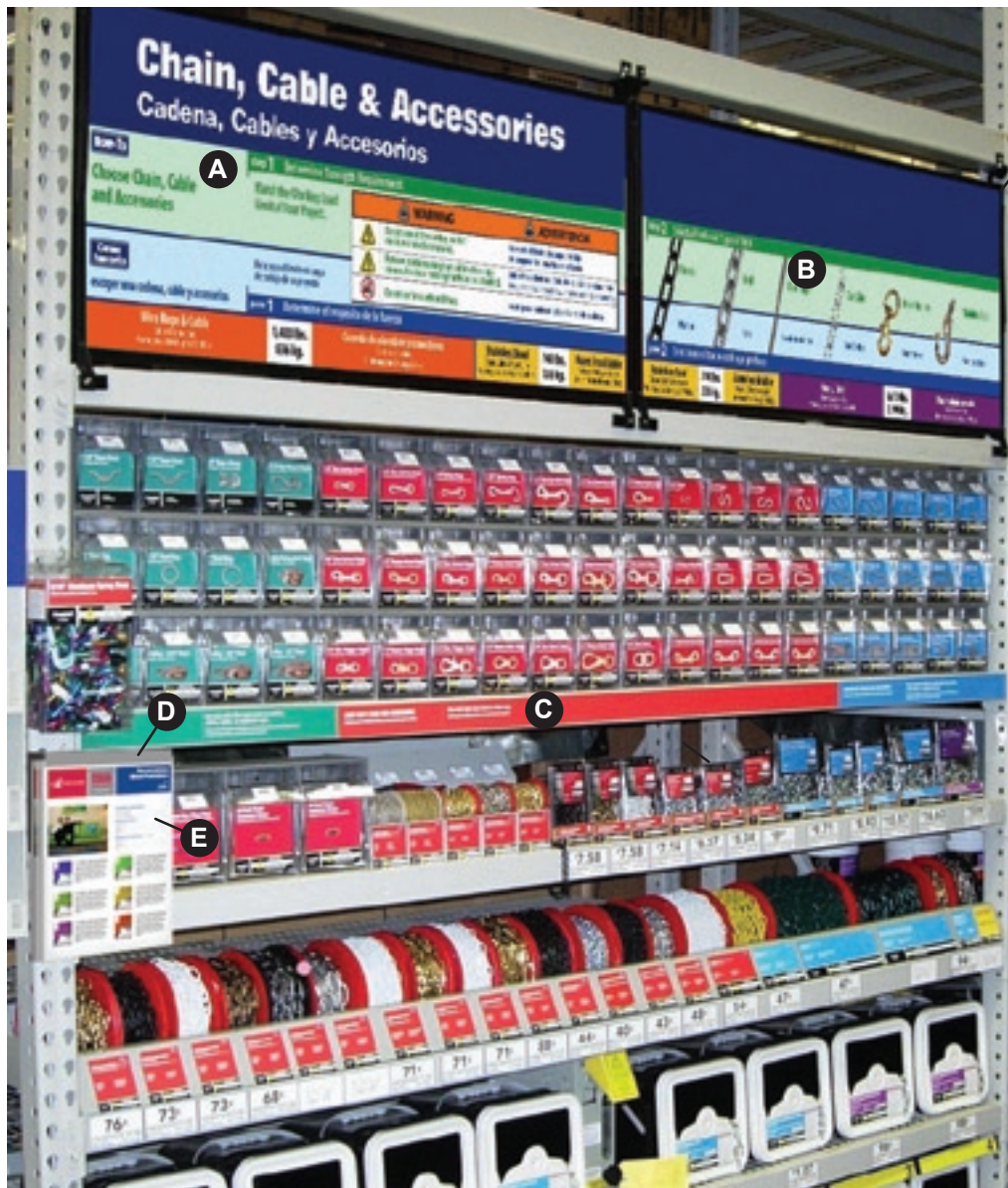
PLANOGRAM INDEX NUMBER: *

00086677

* NOTE: This information is required if you are submitting approved, bilingual materials that are used in U.S. Lowe's stores. If you do not have U.S. materials and are submitting graphics proposed for use in Canadian stores, this Planogram information is not required. See planogram sample on page 7 & 8 of this PDF for reference.

SAMPLE

SAMPLE



<p>Be sure to reference these key characters to their corresponding production information in the Production Specifications Form.</p>	<p>Graphics:</p> <p>A Left Header</p> <p>B Right Header</p> <p>C Beam Strip</p> <p>E Tearpad</p>	<p>Hardware:</p> <p>D Tearpad Holder (Lowe's Reference Code LOW01006127)</p> <p>F Pivot Frame (Lowe's Reference Code APDS48)**</p>
---	---	---

** NOTE: This hardware may no longer be approved for use in Lowe's. Please check with VSGCanada@prattcorp.com before specifying this hardware for your Canadian materials.

Planogram
Index Number

Planogram Name

INDEX: 10350112

V:11 DATE: 7/28/2006

Planogram
Numbers

6 BAYS - (97x42x144) - LH

BAY 1 BAY 2 BAY 3 BAY 4 BAY 5 BAY 6

ELEVATION: 142.000 (Misc. Vacs)	ELEVATION: 142.000 (Misc. Vacs)	ELEVATION: 142.000 (Misc. Vacs)	ELEVATION: 142.000 (Misc. Vacs)	ELEVATION: 142.000 (Steam Cleaners / Extractors)	ELEVATION: 142.000 (Specialty Vacs) (Hand-held & Stick)
ELEVATION: 122.000	ELEVATION: 122.000	ELEVATION: 122.000	ELEVATION: 122.000	ELEVATION: 122.000	ELEVATION: 122.000
SIGNAGE: HEADER SIGNS SHOULD BE MOUNTED FLUSH TO THE TOP OF THE BEAM AT THE 122" LEVEL					
ELEVATION: 68.000	ELEVATION: 68.000	ELEVATION: 68.000	ELEVATION: 68.000	ELEVATION: 68.000	ELEVATION: 68.000
ELEVATION: 52.000	ELEVATION: 52.000	ELEVATION: 52.000	ELEVATION: 52.000	ELEVATION: 52.000	ELEVATION: 52.000
ELEVATION: 51.500	ELEVATION: 51.500	ELEVATION: 51.500	ELEVATION: 51.500	ELEVATION: 51.500	ELEVATION: 51.500
ELEVATION: 3.000	ELEVATION: 3.000	ELEVATION: 3.000	ELEVATION: 3.000	ELEVATION: 3.000	ELEVATION: 3.000

NOTE: TO ENSURE SAFETY OF VERTICAL MERCHANDISE, REFER TO THE LOSS PREVENTION DEPARTMENT'S "SECURING VERTICALLY STORED MERCHANDISE" PROGRAM.

NOTE: SOME ITEMS MAY NEED TO BE TURNED IN ORDER TO FIT

POG Contact # 700-758-3847
See Attached Carpentry and Electrical Report

